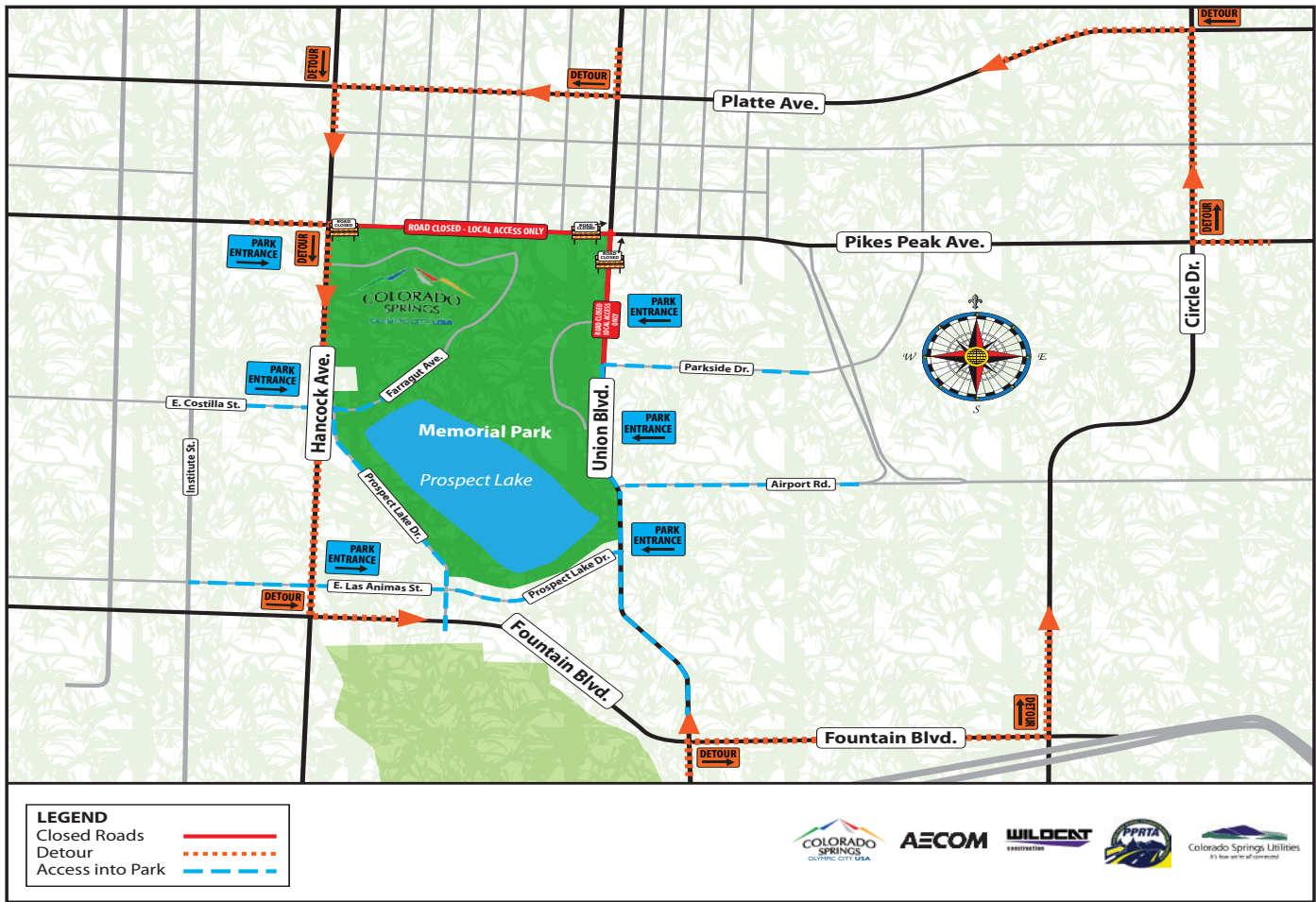


Pikes Peak Pavement Reconstruction Project: Detour Map



COLORADO SPRINGS, Colo. — Starting Friday, May 4, 8:00 pm the intersection of Pikes Peak Avenue and Union Boulevard will be closed to facilitate the installation of new underground utilities and roadway work associated with the Pikes Peak Avenue Reconstruction project.

- Pikes Peak Avenue will be restricted to local access only between Hancock Avenue and Meade Avenue and between Bonfoy Avenue and Printers Parkway
- Union Boulevard will be restricted to local access only between Kiowa and the intersection closure and between Memorial Drive and the intersection closure

Traffic approaching this intersection will be controlled by flaggers for crew and motorist safety during the closure. Motorists will be directed to detours using alternate roads:

- Northbound Union traffic will be diverted along Fountain Blvd east to Circle Dr
- Westbound Pikes Peak traffic will be diverted along Circle Dr. north to Platte Ave
- Southbound Union traffic will be diverted along Platte Ave west to Hancock Ave
- Eastbound Pikes Peak traffic will be diverted along Hancock Ave south to Fountain Boulevard

Access to Memorial Park will be available from Hancock Avenue, Prospect Lake Drive, South Parkside Drive, Airport Road, and from Union Boulevard.

Businesses in the area will remain open and accessible throughout the duration of the project. Access to nearby businesses and residences will be provided throughout the intersection closure.

Mountain Metro Transit routes will be redirected in this area during the closure. Visit <https://coloradosprings.gov/mountain-metro> for updated route information.

Delays are expected. All work is weather-dependent and schedules are subject to change. The Pikes Peak Avenue roadway and its utilities are 60-100 years old and reconstruction will improve safety and travel by creating a smooth road surface and replacing water, gas, and sewer lines.

Location of Project: Pikes Peak Avenue, between Shook Run Trail and Printers Parkway.

Construction Duration: Sept. 2017 - Summer 2019

Typical Working Hours: Mon. - Fri. 7:00 a.m.–7:00 p.m.

Traffic Delays: Motorists could anticipate 10 additional minutes added to the commute through the project. Expect lane switches throughout the duration of the project.

Stay Informed: For information about this project please call the project hotline at 719-593-9239 or email us at: PikesPeakAvenue@gmail.com. If you have an urgent situation please call 719-640-7216. Information and traffic impacts are also available on the project website at coloradosprings.gov/PikesPeakReconstruct.

<https://ColoradoSprings.gov/PikesPeakReconstruct>

