

Kettle and Pine Creek Habitat Project

Trails, Open Space and Parks (TOPS) Working Committee

October 12, 2022

Britt Haley, Director Nominee
Parks, Recreation & Cultural Services Department



Overview Map



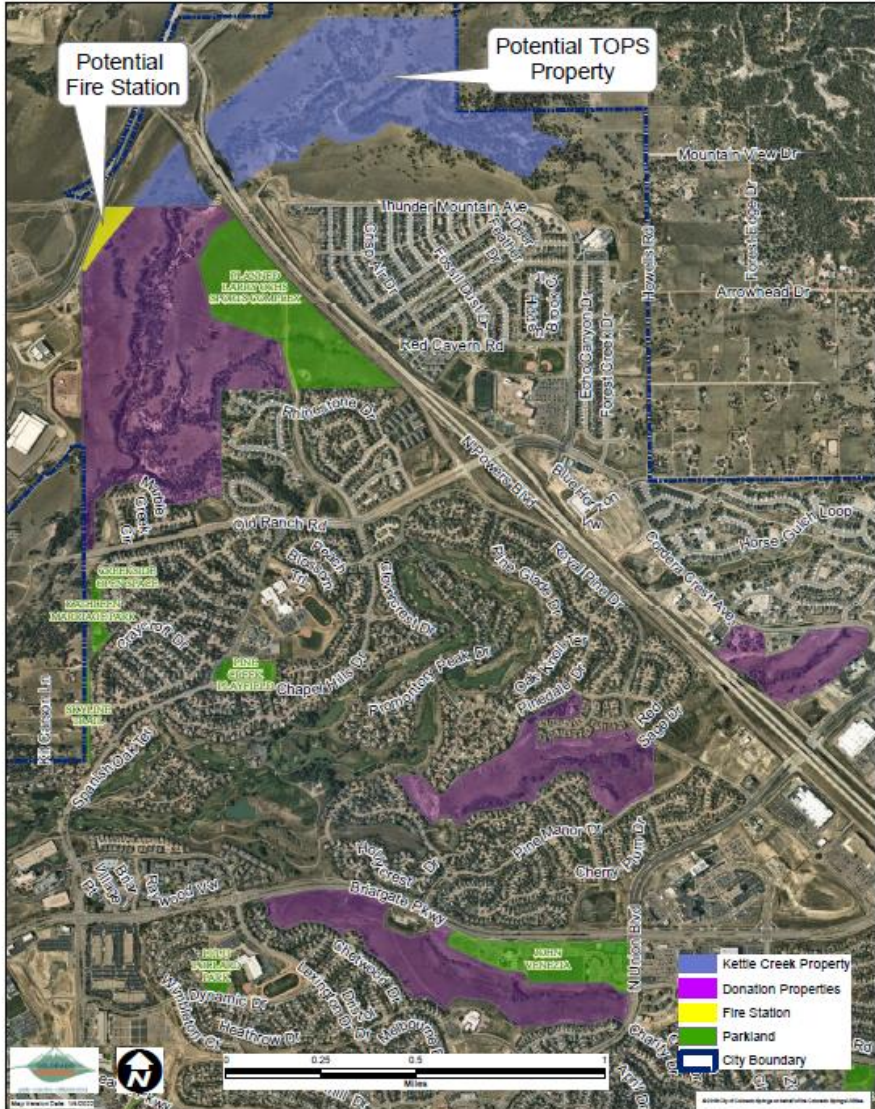
Donation Properties for Kettle Creek and Pine Creek Habitat Project

Potential NE Fire Station location

Larry Ochs Sports Complex Property

TOPS Candidate Open Space Project

John Venezia Community Park



Kettle Creek and Pine Creek Habitat Project



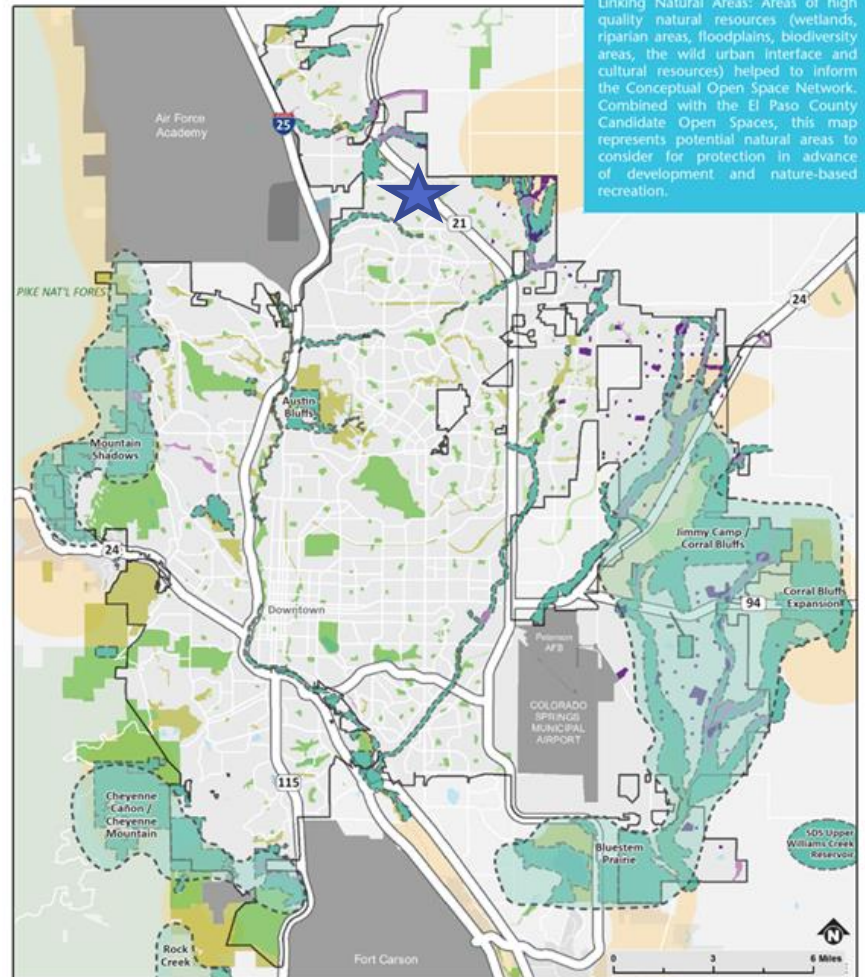
- 352.32 total acres, four parcels
- Land donation by High Valley Land Co, Inc. (La Plata)
- Donation to TOPS Program
- Next to potential TOPS Program acquisition parcels in Kettle Creek Greenway
- Habitat Conservation Plan in effect for the threatened Preble's Meadow Jumping Mouse
- Estimated yearly obligation of \$100,000 for monitoring and land management. TOPS funding proposed

Kettle Creek and Pine Creek Habitat Project



2014 Park System Master Plan identifies the Kettle Creek Greenway as a candidate area for acquisition purposes

Map 27: Open Space Candidate Areas

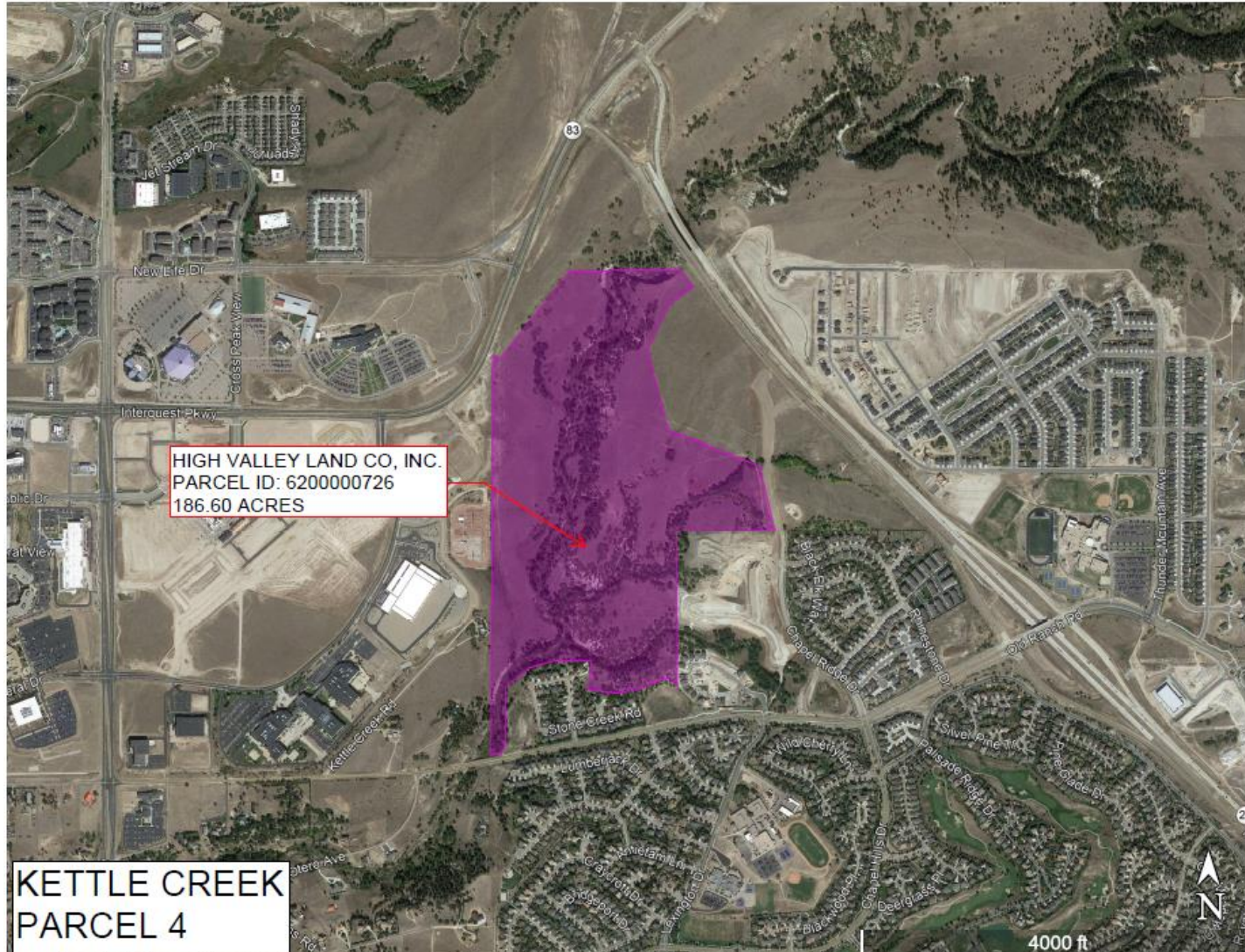


Linking Natural Areas: Areas of high quality natural resources (wetlands, riparian areas, floodplains, biodiversity areas, the wild urban interface and cultural resources) helped to inform the Conceptual Open Space Network. Combined with the El Paso County Candidate Open Spaces, this map represents potential natural areas to consider for protection in advance of development and nature-based recreation.

- Candidate Open Space Area
- El Paso County Candidate Open Space
- Conceptual Open Space Network
- Master Planned Future Park
- Master Planned Future Open Space
- Pike National Forest
- Park Lands (City and Special District)
- Open Space/Special Resource Area/Greenway
- Undeveloped Park Land (City and Special District)
- City Limits

Donation Property

186.60 acres



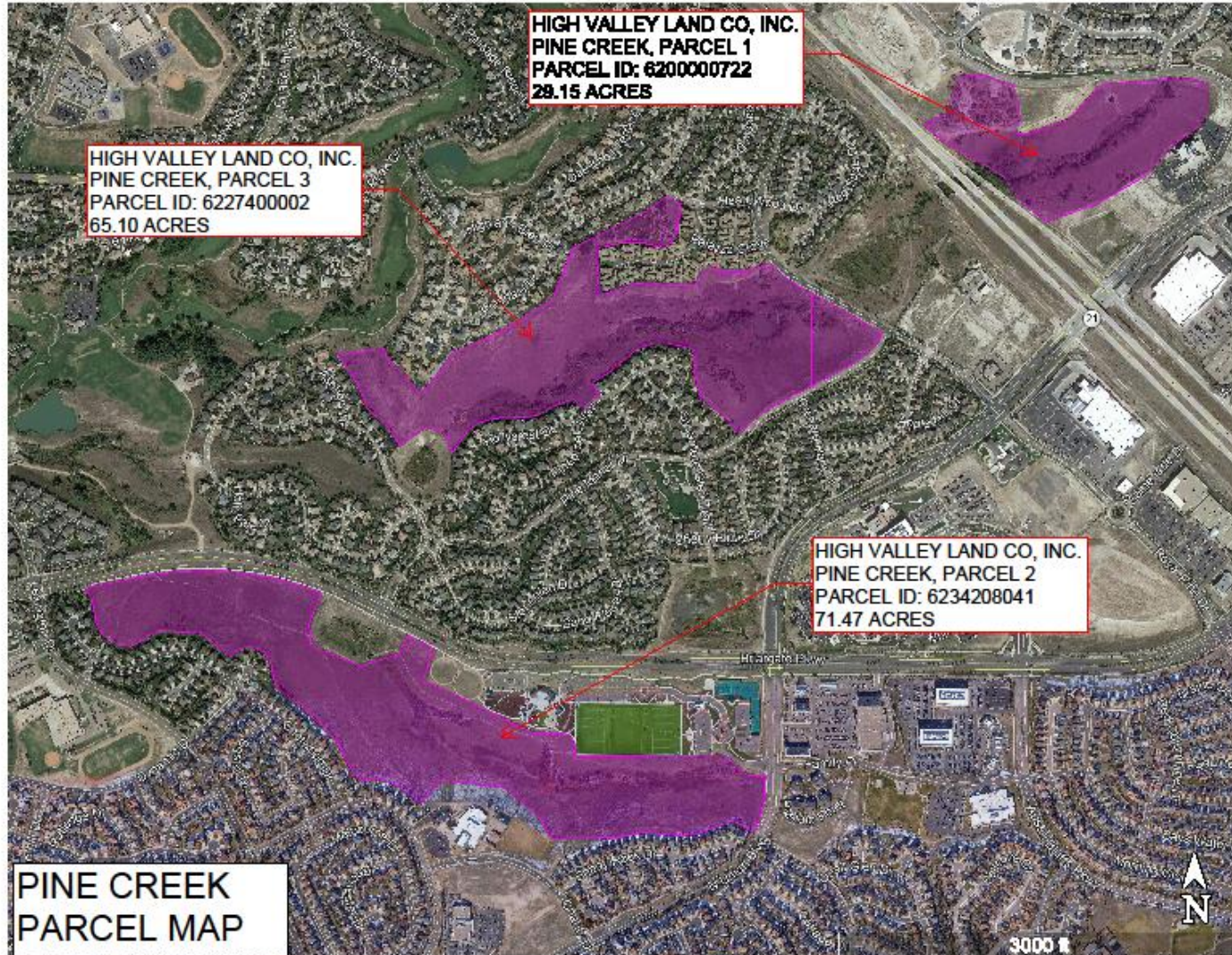
HIGH VALLEY LAND CO, INC.
PARCEL ID: 6200000726
186.60 ACRES

KETTLE CREEK
PARCEL 4

4000 ft

Donation Property

165.72 Acres



Motion



- A motion to recommend that the City accept the 352.32 acres of habitat donation property into the TOPS Program