

LADDERS TRAIL - NORTH CHEYENNE CAÑON PARK

LEGEND

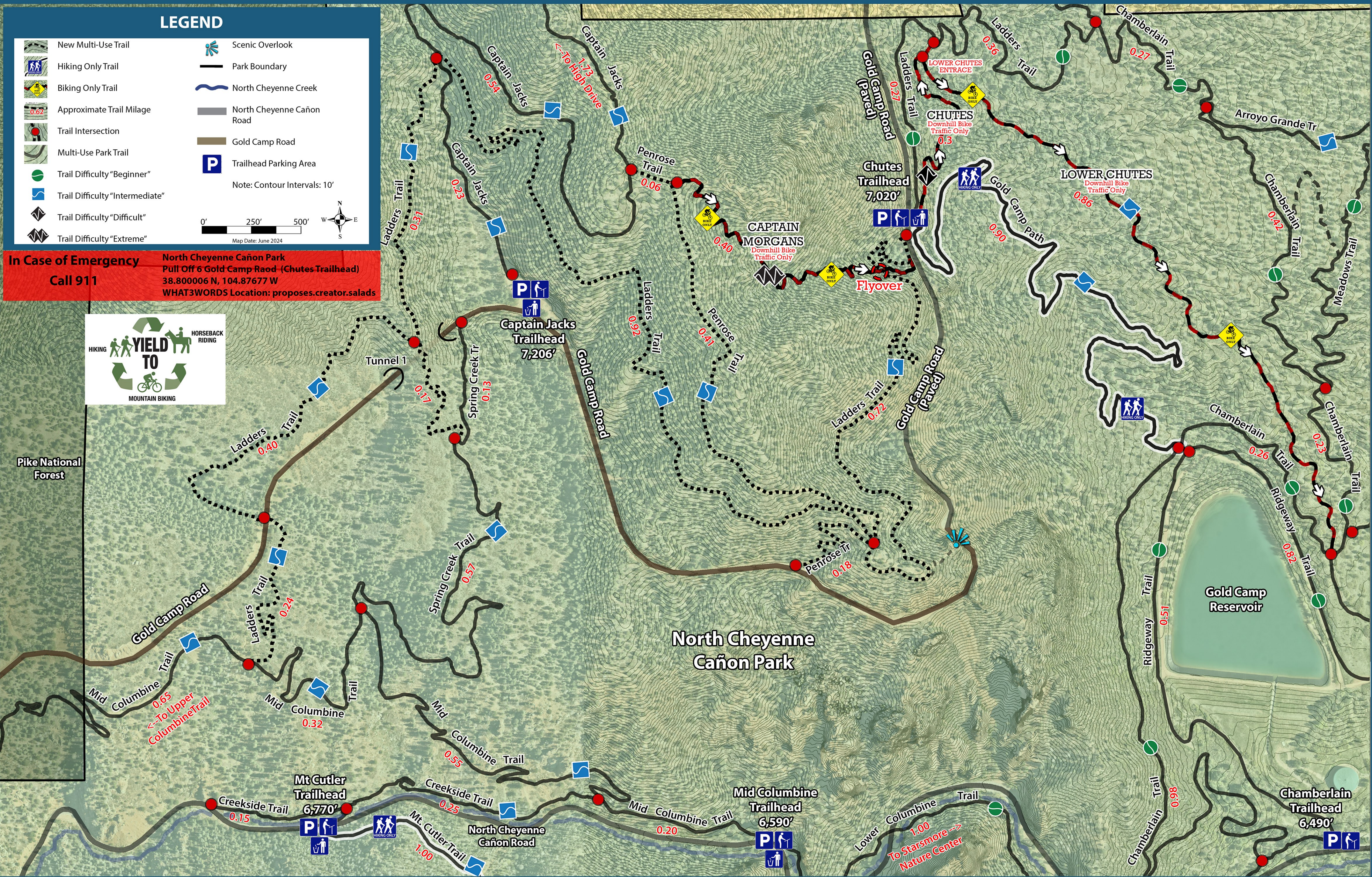
	New Multi-Use Trail		Scenic Overlook
	Hiking Only Trail		Park Boundary
	Biking Only Trail		North Cheyenne Creek
	Approximate Trail Mileage		North Cheyenne Cañon Road
	Trail Intersection		Gold Camp Road
	Multi-Use Park Trail		Trailhead Parking Area
	Trail Difficulty "Beginner"	Note: Contour Intervals: 10'	
	Trail Difficulty "Intermediate"		
	Trail Difficulty "Difficult"		
	Trail Difficulty "Extreme"	Map Date: June 2024	

In Case of Emergency
Call 911

North Cheyenne Cañon Park
Pull Off 6 Gold Camp Road - (Chutes Trailhead)
38.800006 N, 104.87677 W
WHAT3WORDS Location: proposes.creator.salads



Pike National Forest



North Cheyenne Cañon Park

Gold Camp Reservoir

Chamberlain Trailhead 6,490'

Mid Columbine Trailhead 6,590'

Mt Cutler Trailhead 6,770'

North Cheyenne Cañon Road

Lower Columbine Trail 1.00 To Starsmore Nature Center

Mid Columbine Trail 0.65 To Upper Columbine Trail

Captain Jacks 1.73 To High Drive